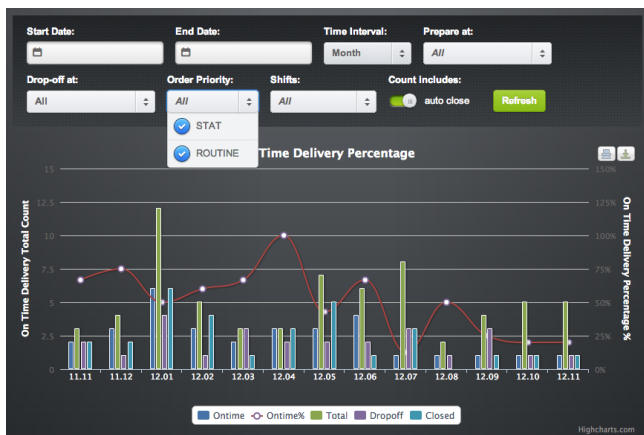


## THE MOST INTUITIVE AND INNOVATIVE HANDHELD TECHNOLOGY FOR MEDICATION TRACKING AND PROCESS MANAGEMENT.

—Developed by experts in pharmacy operations and Lean Six Sigma

### Track, Maintain, and Improve Pharmacy Operations

- Real-time medication and workflow tracking
- Integrated workflow management tools
- An intuitive, easy to use handheld interface
- Seamless integration with existing systems
- Interactive, real-time surveillance of dispensing and
- Delivery through configurable web-based wallboard

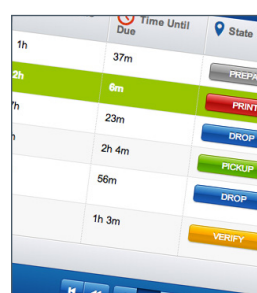


### Drive Performance Improvement

- Instantly available data and web-enabled reports
- At-a-glance views into workflows
- Advanced reporting and analytics
- Chain-of-custody tracking for any medication
- Integrated safety features through Critical Step Verification™



### Reduce Cost and Waste— Improve Efficiencies



- Improve pharmacy workflow and efficiency
- Reduce waste through reduction in “missing” medications
- Improve productivity and reduce re-work
- Enhanced communication with nursing regarding delivery status

Improve turnaround time & on-time delivery by over **60%**

\* based on data from -900 bed hospital, within first 90 days post-PharmTrac.PD install

To learn more about [PharmTrac.PD](#) or other [PlusDelta Technologies products](#), please call **1-800-515-0901** or email [info@plusdeltatech.com](mailto:info@plusdeltatech.com)